



## Self-Propelled Telescopic Booms

S™-40 & S-45, S-40 TraX & S-45 TraX

### Specifications

Models	S-40 / S-40 TraX		S-45 / S-45 TraX	
Measurements	Metric	US	Metric	US
Working height maximum* (on tyres)	14.20 m	46 ft	15.72 m	51 ft
Working height maximum* (with Trax)	14.20 m	46 ft	15.72 m	51 ft
Platform height maximum (on tyres)	12.20 m	40 ft	13.72 m	45 ft
Platform height maximum (with Trax)	12.20 m	40 ft	13.72 m	45 ft
Horizontal reach maximum	9.65 m	31 ft 8 in	11.18 m	36 ft 8 in
Below ground reach	0.97 m	3 ft 2 in	1.50 m	4 ft 11 in
▲ Platform length - 8 ft model	0.91 m	3 ft	0.91 m	3 ft
Platform length - 6 ft model	0.76 m	2 ft 6 in	0.76 m	2 ft 6 in
▲ Platform width - 8 ft model	2.44 m	8 ft	2.44 m	8 ft
Platform width - 6 ft model	1.83 m	6 ft	1.83 m	6 ft
▲ Height - stowed standard tyres	2.49 m	8 ft 2 in	2.49 m	8 ft 2 in
- stowed with Trax	2.49 m	8 ft 2 in	2.49 m	8 ft 2 in
▲ Length - stowed	7.39 m	24 ft 3 in	8.48 m	27 ft 10 in
Length - transport (jib tucked under)			8.80 m	22 ft 4 in
▲ Width - standard tyres	2.30 m	7 ft 6 in	2.24 m	7 ft 4 in
- Trax option	2.24 m	7 ft 4 in	2.30 m	7 ft 6 in
▲ Wheelbase	2.20 m	7 ft 3 in	2.20 m	7 ft 3 in
▲ Ground clearance - center	0.32 m	1 ft 0.5 in	0.32 m	1 ft 0.5 in
- centre Trax	0.32 m	1 ft 0.5 in	0.32 m	1 ft 0.5 in

### Productivity

Lift capacity	227 kg	500 lbs	227 kg	500 lbs
Platform rotation	160°	160°	160°	160°
Vertical jib rotation			135° (+78° / -57°)	
Turntable rotation	360° continuous		360° continuous	
Turntable tailswing (on tyres)	86 cm	2 ft 10 in	86 cm	2 ft 10 in
Turntable tailswing (with Trax)	89 cm	2 ft 11 in	89 cm	2 ft 11 in
Drive speed - 2WD stowed (on tyres)	7.7 km/h	4.8 mph	7.7 km/h	4.8 mph
Drive speed - 4WD stowed (on tyres)	7.7 km/h	4.8 mph	7.7 km/h	4.8 mph
Drive speed - 4WD stowed (with Trax)	3.7 km/h	2.3 mph	3.7 km/h	2.3 mph
Drive speed - raised or extended	30 cm/s	1 ft/s	30 cm/s	1 ft/s
Gradeability** stowed - 2WD	30%	30%	30%	30%
Gradeability** stowed - 4WD	40%	40%	40%	40%
Turning radius - inside	2 m	6 ft 8 in	2 m	6 ft 8 in
- inside with Trax	N/A	N/A	N/A	N/A
Turning radius - outside	4.78 m	15 ft 8 in	4.78 m	15 ft 8 in
- outside with Trax	N/A	N/A	N/A	N/A
Controls	12 V DC proportional		12 V DC proportional	
Tyres - RT air filled	12-16.5 NHS		12-16.5 NHS	
Trax - track system	Quadra-Track system		Quadra-Track system	
Ground Pressure (with Trax)	0.77 kg/cm <sup>2</sup>	11 psi	0.77 kg/cm <sup>2</sup>	11 psi

### Power

Power source	Ford DSG-423 4 cylinder petrol/LPG 56 kW (75 hp)			
	Deutz D 2011 L031 cylinder diesel 36 kW (48 hp)			
	Perkins 404D-22 4 cylinder diesel 38 kW (51 hp)			
Auxiliary power unit	12 V DC	12 V DC	12 V DC	12 V DC
Hydraulic tank capacity	170 L	45 gal	170 L	45 gal
Fuel tank capacity (Diesel)	76 L	20 gal	76 L	20 gal

### Sound & Vibration Levels

Sound pressure level (ground workstation)	84 dBA	84 dBA	84 dBA	84 dBA
Sound pressure level (platform workstation)	76 dBA	76 dBA	76 dBA	76 dBA
Vibration	<2.5 m/s <sup>2</sup>	<8 ft 2 in/s <sup>2</sup>	<2.5 m/s <sup>2</sup>	<8 ft 2 in/s <sup>2</sup>

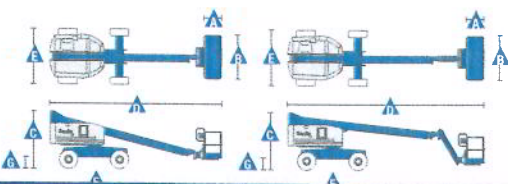
### Weight\*\*\*

2WD (CE air tyres)	5,420 kg	11,950 lbs	6,709 kg	14,790 lbs
4WD (CE air tyres)	5,420 kg	11,950 lbs	6,709 kg	14,790 lbs
add 296 kg	add 296 kg	add 652 lbs	add 296 kg	add 652 lbs
CE Foam Filled tyres				
4 WD (Track system)	6,564 kg	14,440 lbs	7,927 kg	17,440 lbs

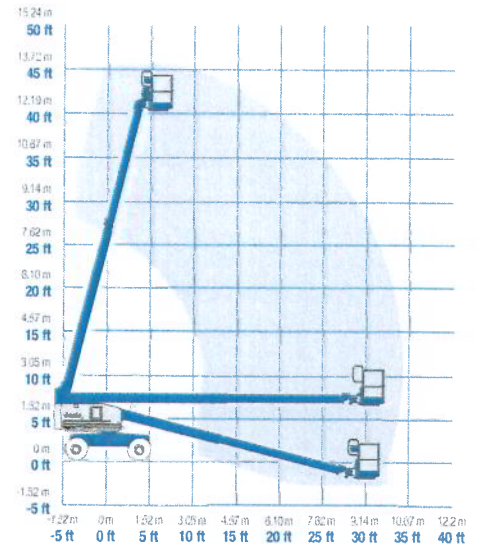
### Standards Compliance

EU Directives: 2006/42/EC - Machinery (harmonized)

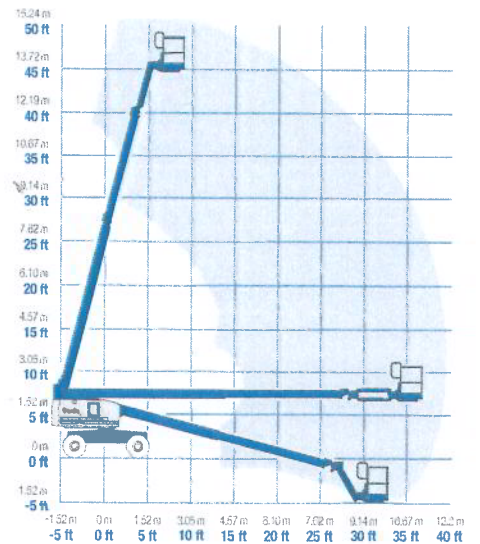
standard EN280:2001+A2:2009; 2004/108/EC (EMC); 2000/14/EC (Outdoor Noise)



Range of Motion S-40 / S-40 TraX



Range of Motion S-45 / S-45 TraX



\* The metric equivalent of working height adds 2 m to platform height. U.S. adds 6 ft to platform height.

\*\* Gradeability applies to driving on slopes. See operator's manual for details regarding slope ratings.

\*\*\* Weight will vary depending on options and/or country standards.



De Hoogwerkerstunter  
Industrieweg 20, 5571 LJ Bergelijk  
T +31 (0)85 400 00 15  
info@hoogwerkerstunter.com  
hoogwerkerstunter.com

IBANnr: NL65ABNR0534047440  
BIC: ABNANL2A

Kamer van Koophandel: 17240941  
BTW nummer: NL820357819B01



## Self-Propelled Telescopic Booms

S<sup>™</sup>-40 & S-45, S-40 TraX & S-45 TraX

### Features

#### Standard Features

##### Measurements

###### S-40, S-40 TraX

- 14.20 m (46 ft) working height
- 9.65 m (31 ft 8 in) horizontal reach
- 227 kg (500 lbs) lift capacity

###### S-45, S-45 TraX

- 15.72 m (51 ft) working height
- 11.18 m (36 ft 8 in) horizontal reach
- 227 kg (500 lbs) lift capacity

##### Productivity

- Self-levelling platform
- Hydraulic platform rotation
- Half-mesh platform inserts with swing gate<sup>(1)</sup>
- Fully proportional Hall effect joystick controls
- Thumb rocker steering
- Fuel select switch on platform and ground control panels (Gas/LPG models)
- Drive enable
- AC power cord to platform
- Tilt alarm
- Descent & travel alarms
- Flashing beacon
- Horn
- Hour meter
- 360° continuous turntable rotation
- Locking turntable covers
- Positive traction drive
- Two speed wheel motors
- Certified load sensor

##### Power

- 12 V DC auxiliary power
- Anti-restart engine protection
- Auto engine fault shutdown
- Intake air heater (Deutz engine)

#### Easily Configured To Meet Your Needs

##### Platform Options

- Steel 2.44 m (8 ft) (standard)
- Steel 1.83 m (6 ft)
- Steel 2.44 m (8 ft) tri-entry

##### Jib Options

- Non-jib
- 1.52 m (5 ft) articulating jib boom

##### Engine Options

- Ford gas/LPG 56 kW (75 hp)
- Deutz diesel 36 kW (48 hp)
- Perkins diesel 38 kW (51 hp)

##### Drive Options

- 2 x 4
- 4 x 4

##### Axle Options

- Active oscillation
- Non-oscillating

##### Tyre Options

- Rough terrain air-filled (standard)
- Rough terrain foam-filled
- Rough terrain non-marking air or foam-filled
- Sealant treated air-filled
- Quadra-Track system



#### Options & Accessories

##### Productivity Options

- Platform swing gate<sup>(1)</sup>
- Half mesh platform inserts with swing gate<sup>(1)</sup>
- Platform top auxiliary rail
- Weld leads to platform<sup>(2)</sup>
- Air line to platform
- Power to platform (incl. plug, socket and ground fault interrupt leakage on request)
- Work lights package (2 on chassis, 2 on platform)
- Dual axis joystick steering
- Hydraulic oil cooler
- Biodegradable hydraulic oil<sup>(3)</sup>
- Hostile environment kit<sup>(4)</sup>: cylinder bellows, boom wiper seals, platform and ground control box cover
- Deluxe hostile environment kit<sup>(4)</sup>: adds to basic kit center turntable shield, ring gear guard, tail pipe guard, engine cover flaps and air pre-cleaner
- Aircraft protection kit<sup>(4)</sup>: platform foam padding and padded disable system
- Tilt cut-out option
- Track & Trace<sup>(5)</sup> (GPS unit providing machine location & operating information)
- Panel cradle package<sup>(2)</sup>
- Lockable platform control box covers
- Tow package<sup>(2)</sup>
- Tool tray

##### Power Options

- Engine gauge package<sup>(2)</sup>: oil pressure, temp & amp
- AC generator packages (110V/60Hz - 220V/50Hz, 3000 W)<sup>(2)</sup>
- Hydraulic MTE generator kit (110V/120V-220V/240V)<sup>(2)</sup>
- Diesel air intake pre-cleaner<sup>(2,3)</sup>
- Diesel catalytic scrubber muffler<sup>(2)</sup>
- LPG tank 15.19 kg (33.5 lbs) capacity<sup>(2,4)</sup>
- Low temperature cut-out module
- Engine heater<sup>(2)</sup>
- Refinery kit with spark arrestor and electric or mechanical Chalwyn valve<sup>(2)</sup>

<sup>(1)</sup> Not available on tri-entry platforms

<sup>(2)</sup> Factory-fit option only

<sup>(3)</sup> Available on selected models only. See your Genie representative for further information.

<sup>(4)</sup> Includes a first 2 years subscription



De Hoogwerkerstunter  
Industrieweg 20, 5571 LJ Bergeijk  
T +31 (0)85 400 00 15  
info@hoogwerkerstunter.com  
hoogwerkerstunter.com

IBANnr: NL65ABNA0534047440  
BIC: ABNANL2A

Kamer van Koophandel: 17240941  
BTW nummer: NL820357819B01