



Self-Propelled Telescopic Booms

S[™]-120 & S[™]-125

Specifications

Models	S [™] -120		S [™] -125	
	US	Metric	US	Metric
Measurements				
Working height maximum*	126 ft	38.58 m	131 ft 2 in	40.15 m
Platform height maximum	120 ft	36.58 m	125 ft 2 in	38.15 m
Horizontal reach maximum	75 ft	22.86 m	80 ft	24.38 m
Below ground reach	6 ft 6 in	1.98 m	10 ft 9 in	3.27 m
▲ Platform length - 8 ft model	3 ft	0.91 m	3 ft	0.91 m
▲ Platform length - 6 ft model	2 ft 6 in	0.76 m	2 ft 6 in	0.76 m
▲ Platform width - 8 ft model	8 ft	2.44 m	8 ft	2.44 m
▲ Platform width - 6 ft model	6 ft	1.83 m	6 ft	1.83 m
▲ Height - stowed	10 ft 1 in	3.07 m	10 ft 1 in	3.07 m
▲ Length - stowed	42 ft 8 in	13.00 m	46 ft 9 in	14.25 m
▲ Length - transport (jib tucked under)	—	—	39 ft 11 in	12.17 m
▲ Width - axles retracted	8 ft 1 in	2.46 m	8 ft 1 in	2.46 m
▲ Width - axles extended	11 ft 1 in	3.38 m	11 ft 1 in	3.38 m
▲ Wheelbase	12 ft	3.66 m	12 ft	3.66 m
▲ Ground clearance - center	1 ft 5 in	0.38 m	1 ft 5.5 in	0.38 m

Productivity

Lift capacity	750 lbs	340 kg	500 lbs	227 kg
Platform rotation	160°		160°	
Vertical jib rotation			135°	
Turntable rotation	360° continuous		360° continuous	
Turntable tailswing - axle retracted	5 ft 6 in	1.68 m	5 ft 6 in	1.68 m
Turntable tailswing - axle extended	4 ft 1 in	1.24 m	4 ft 1 in	1.24 m
Drive speed - stowed	3.0 mph	4.8 km/h	3.0 mph	4.8 km/h
Drive speed - raised below 80 ft	0.68 mph	1.1 km/h	0.68 mph	1.1 km/h
Drive speed - raised above 80 ft	0.34 mph	.55 km/h	0.34 mph	.55 km/h
Gradeability - stowed**	40%		40%	
Turning radius - axle retracted: inside	13 ft 2 in	4.01 m	13 ft 2 in	4.01 m
Turning radius - axle retracted: outside	22 ft 2 in	6.75 m	22 ft 2 in	6.75 m
Turning radius - axle extended: inside	8 ft 6 in	2.59 m	8 ft 6 in	2.59 m
Turning radius - axle extended: outside	18 ft 10 in	5.74 m	18 ft 10 in	5.74 m
Controls	12 V DC proportional		12 V DC proportional	
Tires - RT iug	445/65 D22.5		445/65 D22.5	

Power

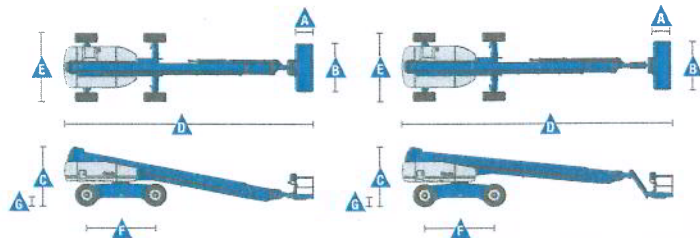
Power source	Deutz TD 2011 L04i 4-cylinder turbo diesel, 74 hp (55 kW)			
	Perkins 804D-33T 4-cylinder turbo diesel, 74 hp (55 kW)			
Auxiliary power unit	12 V DC		12 V DC	
Hydraulic tank capacity	55 gal	208 L	55 gal	208 L
Fuel tank capacity	40 gal	151 L	40 gal	151 L

Weight***

4WD	44,340 lbs	20,112 kg	44,640 lbs	20,248 kg
-----	------------	-----------	------------	-----------

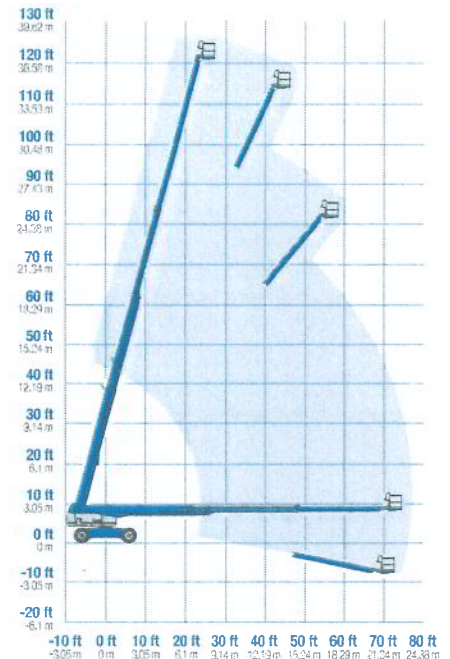
Standards Compliance

ANSI A92.5, CSA B354.4, EN 280, AS 1418.10

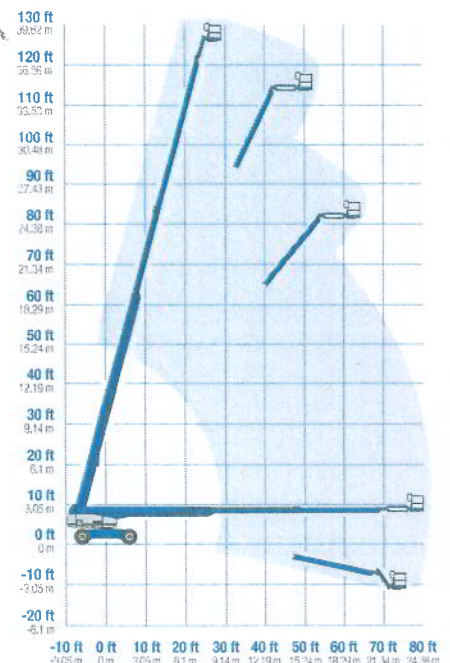


www.genielift.com

Range Of Motion S[™]-120



Range Of Motion S[™]-125



* The metric equivalent of working height adds 2 m to platform height. U.S. adds 6 ft to platform height.

** Gradeability applies to driving on slopes. See operator's manual for details regarding slope ratings.

*** Weight will vary depending on options and/or country standards.



De Hoogwerkerstunter
Industrieweg 20, 5571 LJ Bergeijk
T +31 (0)85 400 00 15
info@hoogwerkerstunter.com
hoogwerkerstunter.com

IBANnr: NL658BNR0534047440
BIC: ABNANL2A

Kamer van Koophandel: 17240941
BTW nummer: NL820357819B01



Self-Propelled Telescopic Booms

S™-120 & S™-125

Features

Standard Features	Easily Configured To Meet Your Needs	Options & Accessories
<p>Measurements</p> <p>S™-120</p> <ul style="list-style-type: none"> • 126 ft (38.58 m) working height • 75 ft (22.86 m) horizontal reach • 750 lb (340 kg) lift capacity <p>S™-125</p> <ul style="list-style-type: none"> • 131 ft 2 in (40.15 m) working height • 80 ft (24.38 m) horizontal reach • 500 lb (227 kg) lift capacity <p>Productivity</p> <ul style="list-style-type: none"> • Self-leveling platform • 160° hydraulic platform rotation • Proportional joystick controls • Hydraulic oil cooler • Drive enable • AC power cord to the platform • Horn • Hour meter • Tilt alarm • Descent alarm • 360° continuous turntable rotation • Positive traction 4WD • Two speed wheel motors • Four wheel high angle steer • Four steering modes: front, rear, crab and coordinated • Four wheel brakes • Configurable controls to limit lift height to 91 ft (27.74 m) • On board full diagnostics and engine monitoring display • Configurable controls to limit lift height to 80 ft (24.38 m) • Platform work lights • Lockable platform control box cover <p>Power</p> <ul style="list-style-type: none"> • 12 V DC auxiliary power • Anti-restart engine protection • Auto engine fault shutdown • Swing out engine tray • Welder ready 12.5 kW AC generator 	<p>Platform Options</p> <ul style="list-style-type: none"> • Steel 8 ft (2.44 m) (standard) • Steel 6 ft (1.83 m) • Steel 8 ft (2.44 m) tri-entry <p>Jib Options</p> <ul style="list-style-type: none"> • Non-jib (S-100 only) • 5 ft (1.52 m) jib boom (S-105 only) <p>Engine Options</p> <ul style="list-style-type: none"> • 74 hp (55 kW) Deutz diesel Tier 4i (Standard) • 74 hp (55 kW) Perkins diesel Tier 4i <p>Drive/Steer</p> <ul style="list-style-type: none"> • 4WD (standard) • 4WS (standard) <p>Axle</p> <ul style="list-style-type: none"> • Extendable axles (standard) <p>Tire</p> <ul style="list-style-type: none"> • Rough terrain foam-filled (standard) 	<p>Productivity Options</p> <ul style="list-style-type: none"> • Half-mesh platform inserts with swing gate • Platform top auxiliary rail • Welder package • Deluxe hostile environment kit • Thumb rocker steer • Tool tray • Light package • Entry toe boards • Pipe cradle (pair) • Panel cradle package • Operator protective structure <p>Power Options</p> <ul style="list-style-type: none"> • Cold weather kit • Diesel scrubber/catalytic muffler • Intake air pre-cleaner



Genie United States

18340 NE 76th Street
P.O. Box 97030
Redmond, Washington 98073-9730
Telephone +1 (425) 881-1800
Toll Free in USA/Canada +1 (800)-536-1800
Fax +1 (425) 883-3475

Distributed By:

Effective Date: January, 2014. Product specifications and prices are subject to change without notice or obligation. The photographs and/or drawings in this document are for illustrative purposes only. Refer to the appropriate Operator's Manual for instructions on the proper use of this equipment. Failure to follow the appropriate Operator's Manual when using our equipment or to otherwise act responsibly may result in serious injury or death. The only warranty applicable to our equipment is the standard written warranty applicable to the particular product and sale and we make no other warranty, express or implied. Products and services listed may be trademarks, service marks or trade names of Terex Corporation and/or their subsidiaries in the USA and many other countries. Genie is a registered trademark of Terex South Dakota, Inc. © 2014 Terex Corporation

S120 0219L Part No. 103971

www.genielift.com



De Hoogwerkerstunter
Industrieweg 20, 5571 LJ Bergeijk
T +31 (0)85 400 00 15
info@hoogwerkerstunter.com
hoogwerkerstunter.com

IBANnr: NL65ABNR0534047440
BIC: ABNANL2A

Kamer van Koophandel: 17240941
BTW nummer: NL820357819801